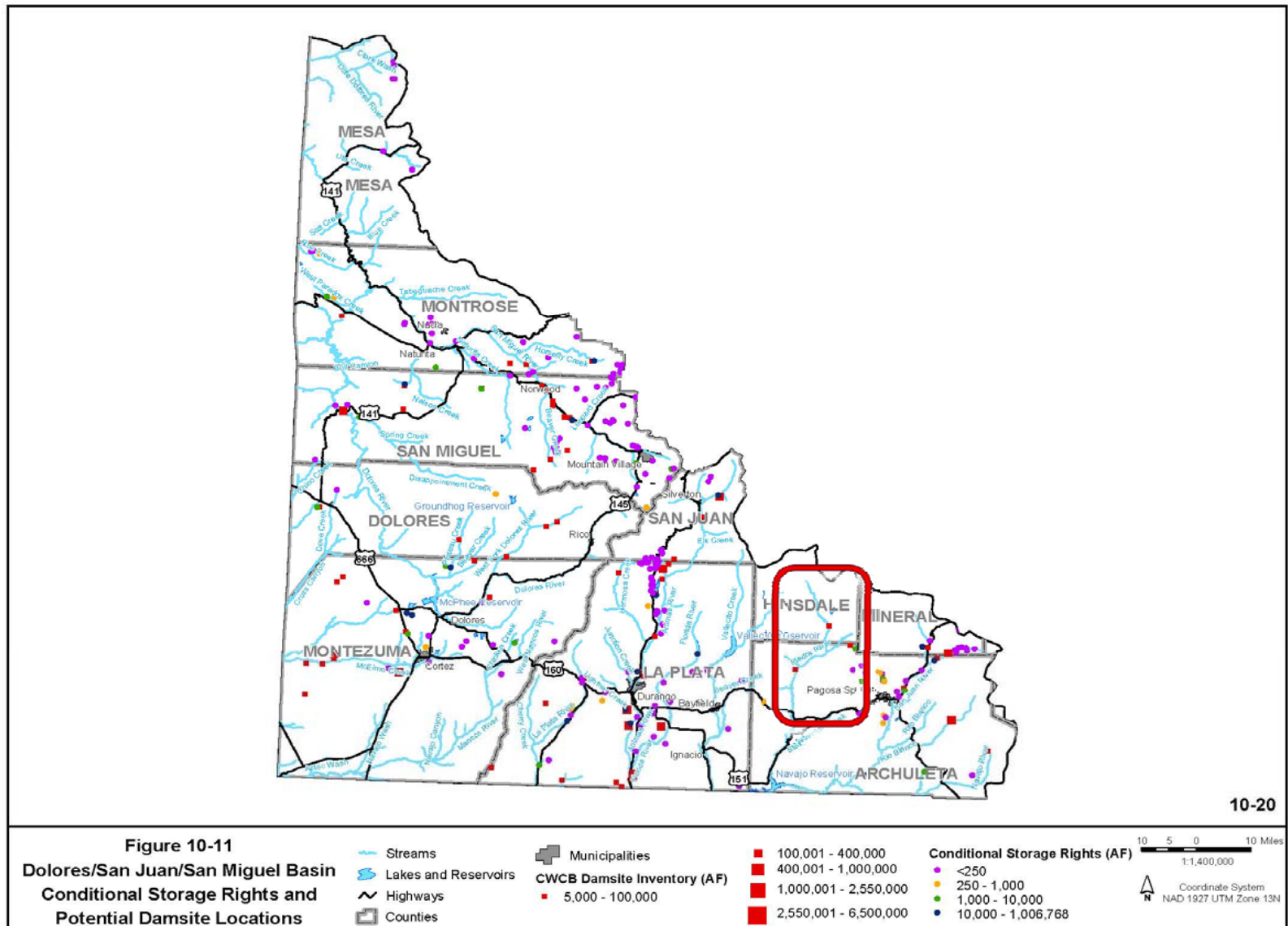


Piedra River RPW

Presented by Steve Fearn February 12, 2013
Prepared by the CWCB

Dam Sites in SWSI:



Source of Dam Sites in SWSI:

COLORADO DAM SITE INVENTORY



Colorado Water Conservation Board
Department of Natural Resources

Revised
August 1996

Purpose of Dam Site Inventory

- Statute required the CWCB to compile an inventory of potential dam and reservoir sites within CO:
 - > 20,000 af, or
 - other sites the CWCB deems important
 - (i.e. conditional reservoirs > 5,000 af)
- CWCB was instructed to utilize the inventory to:

"identify potential dam and reservoir sites, the development of which may be stopped because of on-going land uses which are encroaching upon needed lands or because of other circumstances."

Sources of Information

Dam Site Inventory

- Based on:
 - State Engineer's water rights tabulation
 - All published water resource development studies and reports (over 35 studies reviewed)
 - Contacts with several Water Conservancy Districts, Division Engineers, and consulting engineers
- No original engineering work/field investigations were performed by CWCB
- For Hinsdale/Mineral/Archuleta Counties the following references were noted in Inventory:
 - U.S. Bureau of Reclamation, Durango, Colorado
 - Colorado Division of Water Resources, Water Rights Tabulation

Table Excerpts from Dam Site Inventory – Piedra River Drainage

Colorado Water Conservation Board Inventory of Potential Dam and Reservoir Sites

Page 25

01-Aug-96

County	WD	Stream	Dam Site	Sec	Twn	Range	PM	Elevation	Dam Height	Capacity (acre-feet)	Potential Uses	Water Rght (Acre-feet)	Adj. Type	Date Adjudicated	Source of Information
Water Division: 7															
Archuleta		Blanco	Blanco	2	34N	1E		8,120	0	165,500		0			Bureau of Reclamation, Durango, Colorado
Archuleta	29		DRY GULCH RESERVOIR	5	35 N	1 W	N	0	0	0		6,300	23	12/19/1968	DWR Tabulation
Archuleta	29		EAST FORK SAN JUAN RES	5	36 N	1 E	N	0	0	0		35,200	23	12/19/1968	DWR Tabulation
Archuleta		Piedra	First Box	32	36N	4W		7,355	280	74,000	IR	0			Bureau of Reclamation, Durango, Colorado
Archuleta	78	Devil Creek	ONEAL PARK RESERVOIR	1	35 N	3 W	N	0	0	0		40,700	23	12/19/1968	DWR Tabulation
Colorado															
Hinsdale		Weminuche	Weminuche	6	37N	3W		8,065	100	41,000		0			Bureau of Reclamation, Durango, Colorado
Hinsdale		Weminuche	Weminuche	6	37N	3W		8,065	100	41,000		0			Bureau of Reclamation, Durango, Colorado
Hinsdale	78		WEMINUCHE RESERVOIR	18	37 N	3 W	N	0	0	0		5,700	23	12/19/1968	DWR Tabulation
Hinsdale	78		WEMINUCHE RESERVOIR	18	37 N	3 W	N	0	0	0		5,700	236	12/19/1968	DWR Tabulation
La Plata	30	Animas River	Animas	10	T35N	R9W	N	6,595	60	100,000	IR, M&I	0			Bureau of Reclamation, Durango

- Weminuche Reservoir dam site and water right are indicated in different locations
- O'Neal Park Reservoir decree indicates that it is located on Devil Creek which is tributary to the Piedra below Highway 160

Storage Water Rights

Selected Storage Rights (> 10 acre-feet) in the Piedra River Drainage Above Highway 160

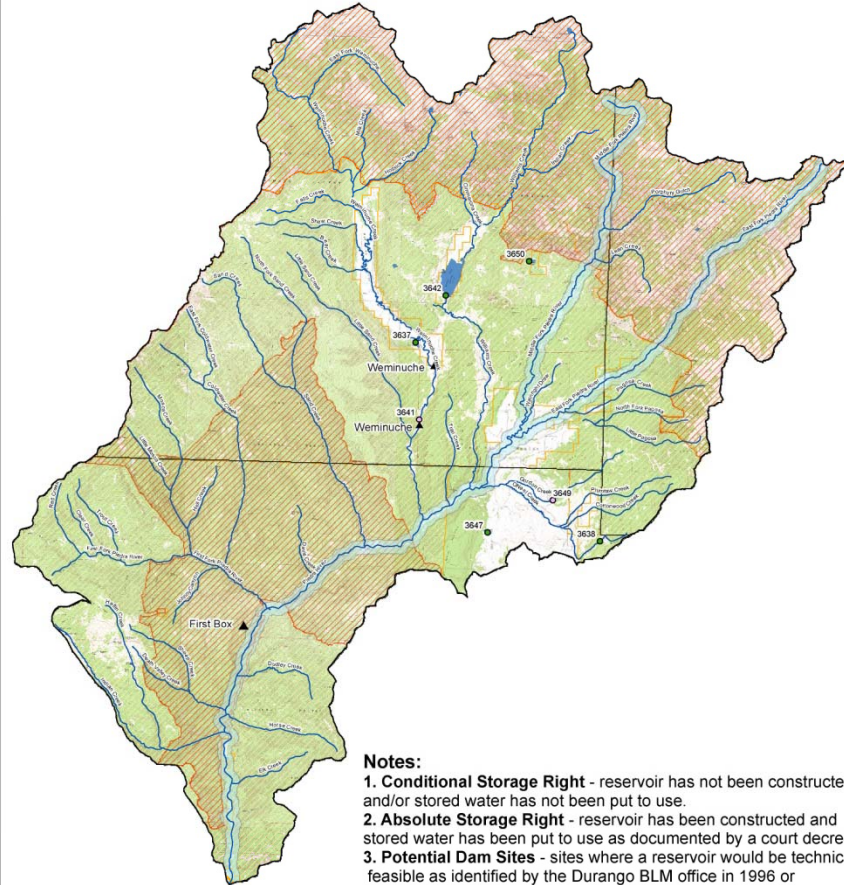
ID	Name	Water Source	Location (Twp, Rng, Section, Q160, Q40, Q10)	Adjudication Date	Priority Date	Volume (acre-feet)	Status	Case No(s).
3637	POMA RESERVOIR	WEMINUCHE CREEK	38N 4W 36 SE SE SE	12/31/1971	7/1/1941	26.53	A	W0407
3638	SPRING CREEK RESERVOIR	PLUMTEAU CREEK	36N 2HW 2 NE SE NE	12/19/1968	6/30/1930	46.2	A	CA0308-D
3641	WEMINUCHE RESERVOIR	WEMINUCHE CREEK	37N 3W 18 NW SW NW	12/19/1968	7/21/1967	5,700	C, AB	CA0308-D
3642	WILLIAMS CREEK RESERVOIR	WILLIAMS CREEK	38N 3W 30 NE NE SE	12/19/1968	10/1/1955	10,084	A	CA0308-D
3647	O'CONNEL LAKE	PLUMTEAU CREEK	36N 3W 15 NW SE SE	12/31/1974	12/31/1899	42	A	W1283
3649	GORDON CREEK RESERVOIR	PLUMTEAU CREEK	37N 2HW 12 SE SW SW	12/31/1974	4/9/1974	1,020	C, DEX	W1297
3650	PALISADE LAKE	MIDDLE FORK PIEDRA RIVER	38N 3W 15 SE SW SW	12/31/1977	12/31/1923	50	A	W1702

Notes:

- A = Absolute Water Right - reservoir has been constructed and stored water has been put to use as documented by a court decree.
- C = Conditional Water Right - reservoir has not been constructed and/or stored water has not been put to use.
- AB = Abandoned Water Right - water right has been abandoned as documented by a court decree.
- DEX = Due Diligence Expired - due diligence period in court decree has expired and water right has been effectively abandoned.



Water Rights and Potential Dam Sites in the Piedra River Drainage Above Highway 160



Notes:
1. Conditional Storage Right - reservoir has not been constructed and/or stored water has not been put to use.
2. Absolute Storage Right - reservoir has been constructed and stored water has been put to use as documented by a court decree.
3. Potential Dam Sites - sites where a reservoir would be technically feasible as identified by the Durango BLM office in 1996 or locations of conditional storage rights existing as of 1996. These sites are included in the CWCB Damsite Inventory and in Figure 10-11 of the SWSI 2010 report.

Legend

Storage (>10af) Potential Dam Sites
Water Right Status Capacity (AF)

- Absolute ▲ 40700
- Conditional ▲ 40701 - 41000
- ▲ 41001 - 74000

- ~ Rivers
- HIGHWAYS
- Alternative A Suitable WSR
- County Boundary
- ▨ Wilderness Area
- ▨ USFS Land



0 1 2 3 4
Miles