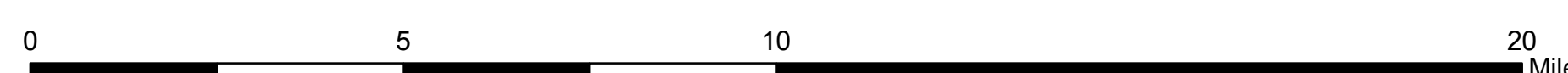


# SAN JUAN PUBLIC LANDS

## Alternative B Management Areas

### with the Gothic Shale Gas Play Area on the Dolores District

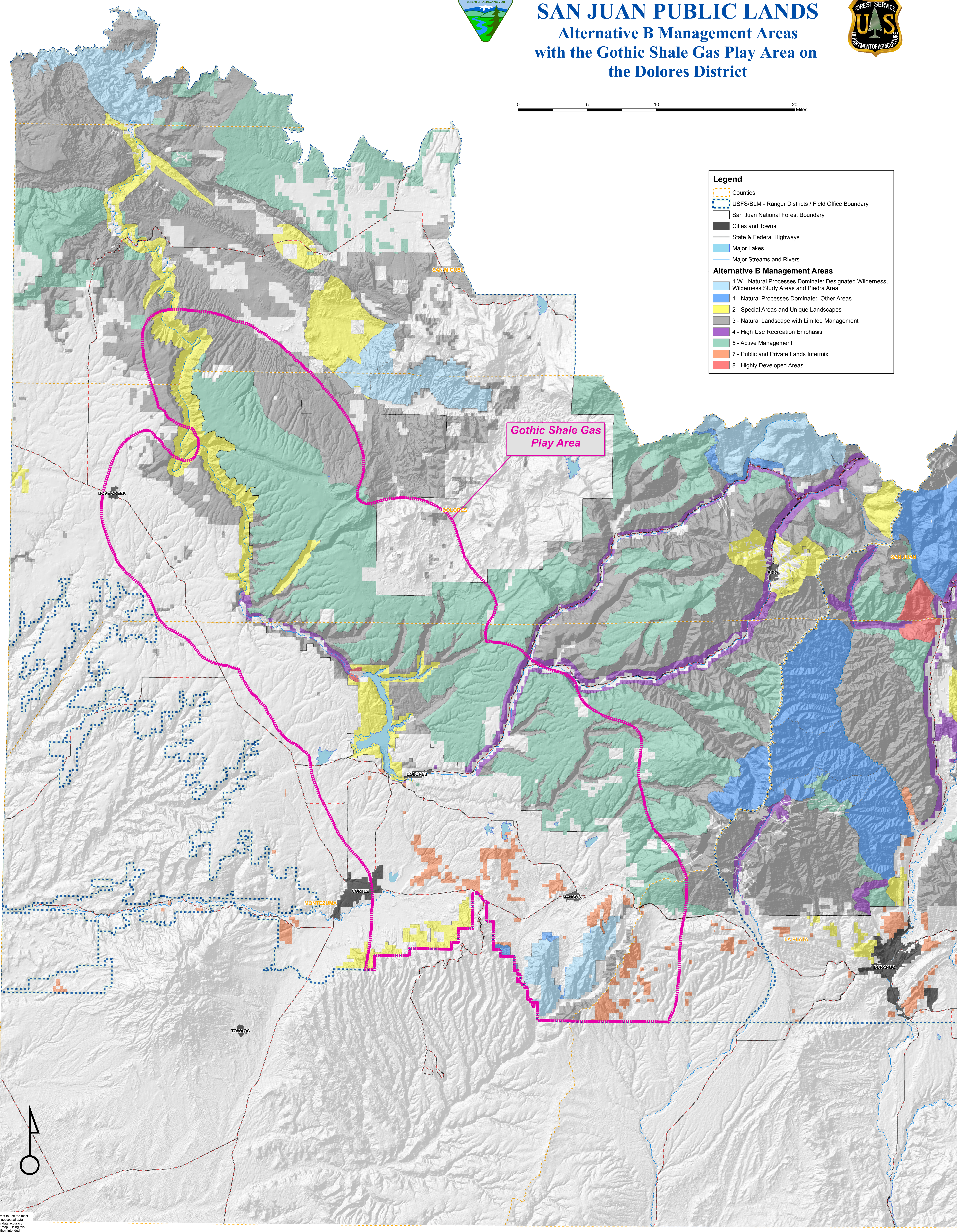


**Legend**

- Counties
- USFS/BLM - Ranger Districts / Field Office Boundary
- San Juan National Forest Boundary
- Cities and Towns
- State & Federal Highways
- Major Lakes
- Major Streams and Rivers

**Alternative B Management Areas**

- 1 W - Natural Processes Dominate: Designated Wilderness, Wilderness Study Areas and Piedra Area
- 1 - Natural Processes Dominate: Other Areas
- 2 - Special Areas and Unique Landscapes
- 3 - Natural Landscape with Limited Management
- 4 - High Use Recreation Emphasis
- 5 - Active Management
- 7 - Public and Private Lands Intermix
- 8 - Highly Developed Areas



ET  
NAD 83, Polyconic Projection  
August 30, 2011

The USFS and BLM attempt to use the most current and complete geospatial data available. Geospatial data accuracy varies by source and may not be as accurate as other data sources. The USFS and BLM reserve the right to correct, update or modify geospatial inputs without notification.