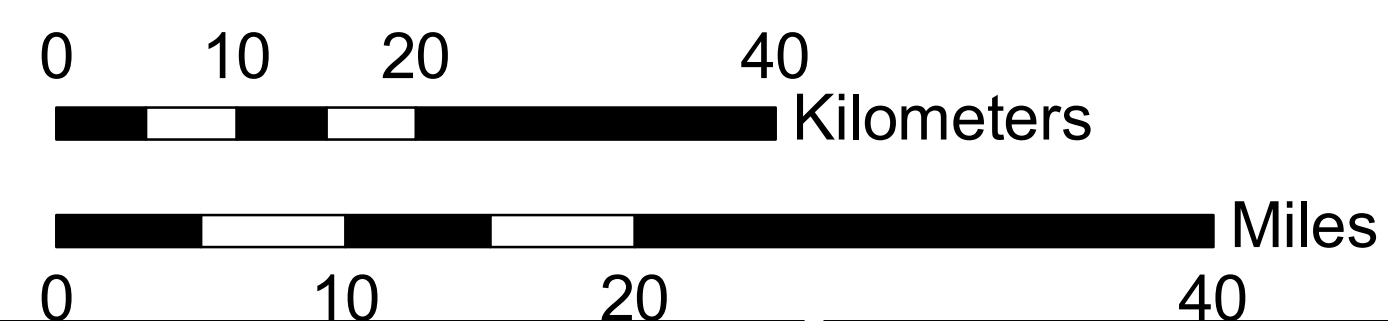
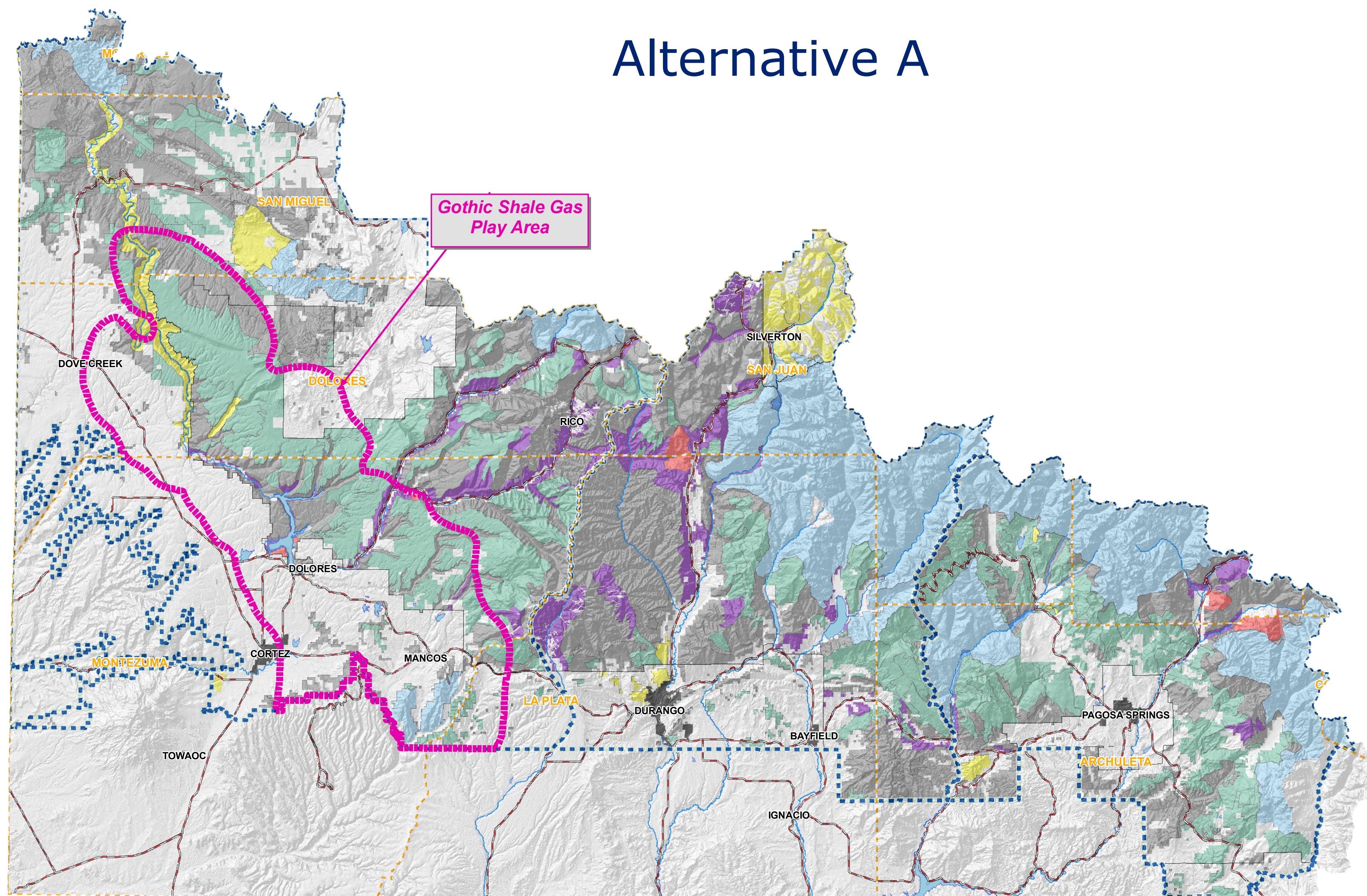


SAN JUAN PUBLIC LANDS

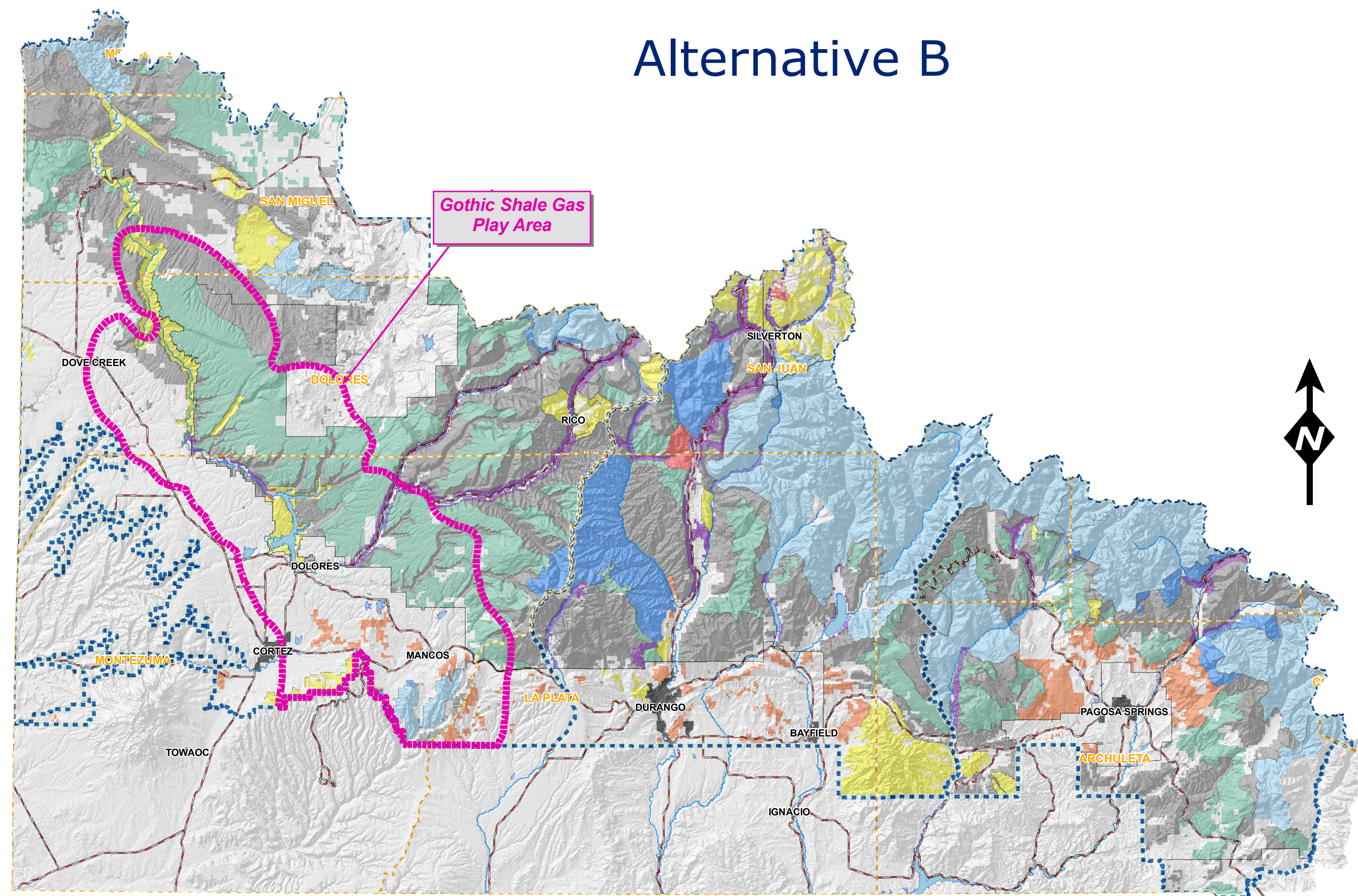
Management Area Alternatives with the Gothic Shale Gas Play Area



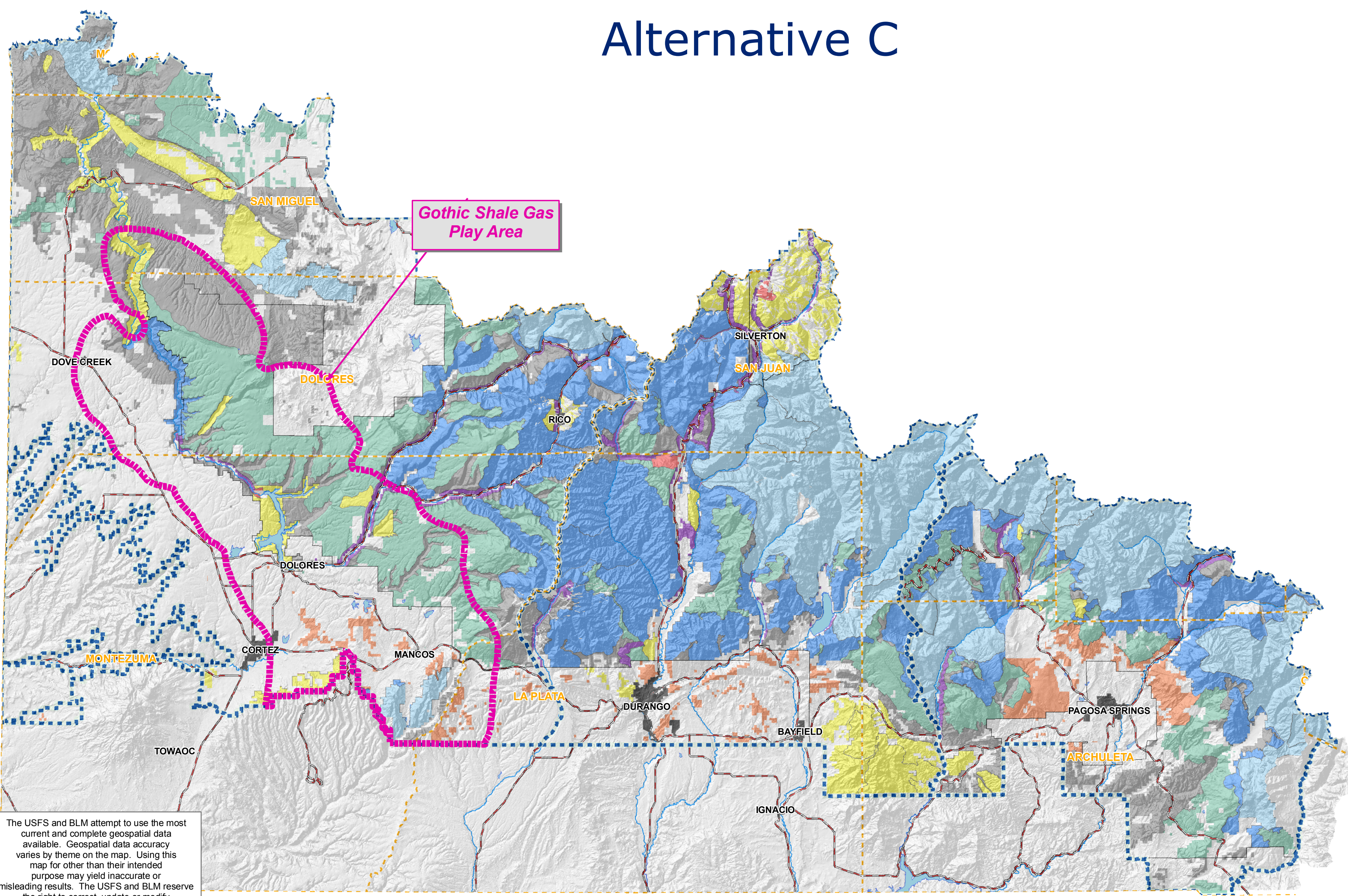
Alternative A



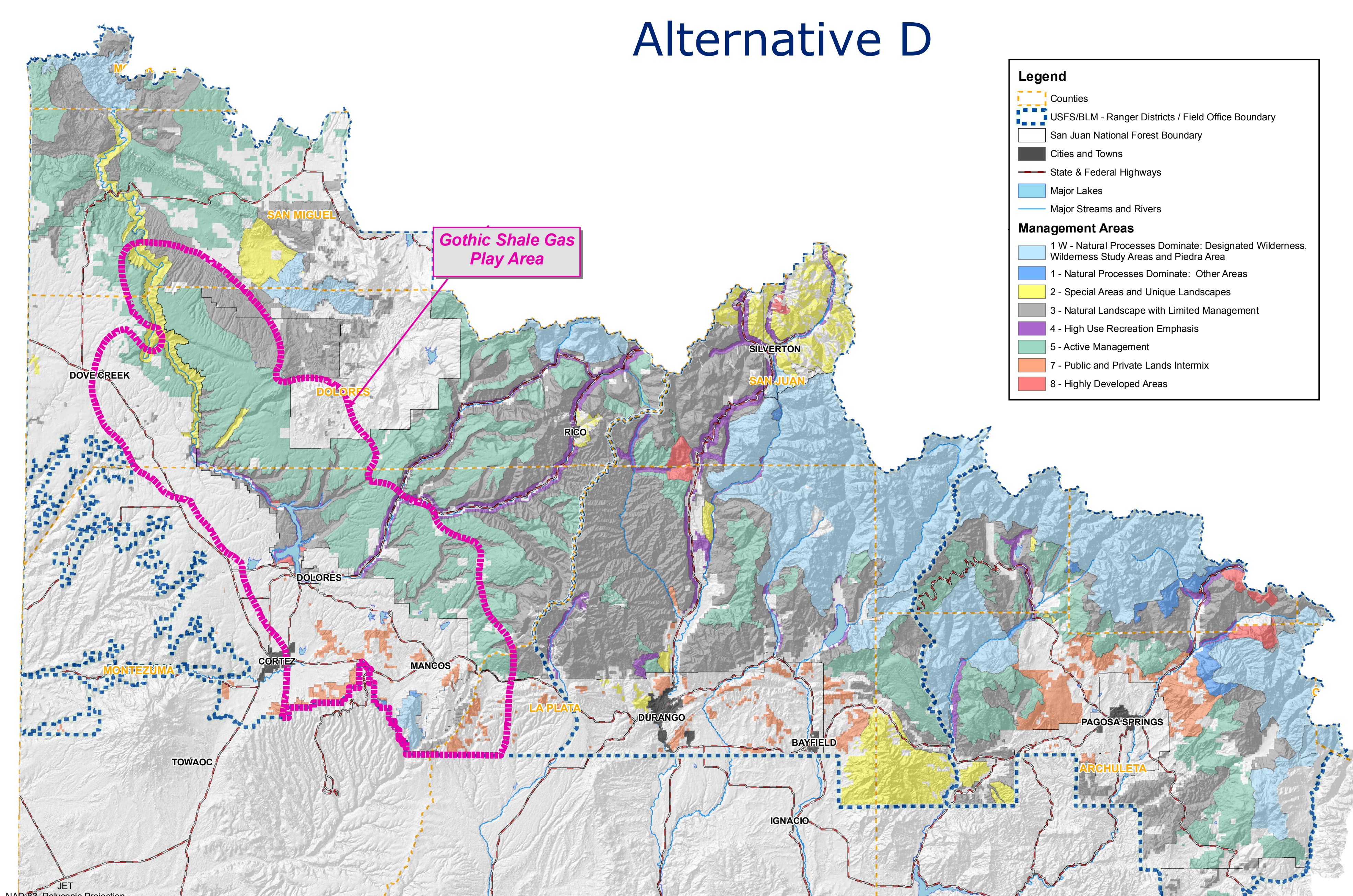
Alternative B



Alternative C



Alternative D



Legend

- Counties
- USFS/BLM - Ranger Districts / Field Office Boundary
- San Juan National Forest Boundary
- Cities and Towns
- State & Federal Highways
- Major Lakes
- Major Streams and Rivers

Management Areas

- 1 - Natural Processes Dominate: Designated Wilderness, Wilderness Study Areas and Piedra Area
- 2 - Special Areas and Unique Landscapes
- 3 - Natural Landscape with Limited Management
- 4 - High Use Recreation Emphasis
- 5 - Active Management
- 7 - Public and Private Lands Intermix
- 8 - Highly Developed Areas

The USFS and BLM attempt to use the most current and complete geospatial data available. Geospatial data accuracy varies by theme on the map. Using this map for other than their intended purpose may yield inaccurate or misleading results. The USFS and BLM reserve the right to correct, update or modify geospatial inputs without notification.

NET
NAD83, Polyconic Projection
August 30, 2011